



element HT5

Veterinary Hematology Analyzer

True 5-part: laser + impedance + colorimetric hematology

Three discrete measurement channels combine to provide an accurate Complete Blood Count with true 5-part differential. In only 60 seconds get results you can trust with laser flow cytometry, impedance counts and colorimetric detection technologies. This allows the EHT5 to detect not only white blood cell volume, but cellular complexity and granularity as well. While accurate and fast, the Element HT5 remains very simple to use with a large color touch screen, intuitive navigation, simplified data entry and easy reagent management. Fast enough for the busiest clinics and cost effective for all.

Results in under 60 seconds


5 Part WBC Differential

Profitable - low cost per test

Intuitive Touchscreen Interface



Combined Technologies

	Counting Channels	Technology	Parameters
	① Diff Channel	Flow Cytometry	LYM, MON, NEU, EOS
	② RBC/PLT Channel	Impedance	RBC/PLT
	③ Baso/HGB Channel	Colorimetry	BAS, WBC, HGB



Features:

HT5

20 Test Parameters

Consolidated Results and Reporting

Combine results using the Heskaview Integrated Software program or transmit to your PMS. Rapidly retrieve patient worklist with bi-directional communication.

Easy Reagent Management

Refill reagents with ease using bar-code scanner and on-board menu functions. Internal reagent storage saves space and reduces clutter.

Multiple Species Availability

Dog, Cat, Horse, Cow, Ferret, Goat, Llama, Monkey, Mouse, Giant Panda, Red Panda, Pig, Rabbit, Rat and Sheep.

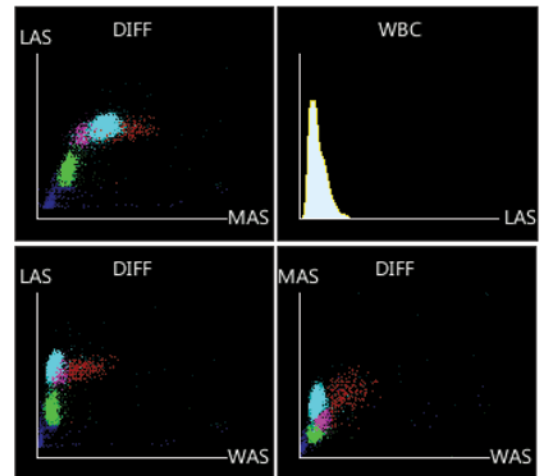
Intuitive Navigation

Simplified data entry and patient test review with numeric results, histograms and scatter plots.

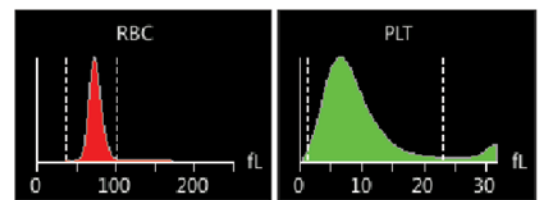


White Blood Cell	Red Blood Cell
Total White Blood Cell (WBC)	Total Red Blood Cell (RBC)
Neutrophil Number (NEU#)	Hemoglobin (HGB)
Lymphocyte Number (LYM#)	Hematocrit (HCT)
Monocyte Number (MON#)	Mean Cell Volume (MCV)
Eosinophil Number (EOS#)	Mean Cell Hemoglobin (MCH)
Basophil Number (BAS#)	Mean Cell Hemoglobin Conc. (MCHC)
Neutrophil Percent (NEU%)	Red Blood Cell Distribution (RDW-CV)
Lymphocyte Percent (LYM%)	
Monocyte Percent (MON%)	Platelet
Eosinophil Percent (EOS%)	Total Platelet (PLT)
Basophil Percent (BAS%)	Mean Platelet Volume (MPV)

WBC Scatter Plots & Histograms



RBC /PLT Histograms



Results and Reporting

Easy to Use:

- Web-style links for simple navigation.

Simple Data Management:

- Rapidly retrieve trending data from patient record.

Efficient:

- Assign, unassign or delete multiple items at once.
- Species-specific reference ranges and color-coded flags make it easy to quickly evaluate patient data.