



# **element HT5** Veterinary Hematology Analyzer

## True 5-part: laser + impedance + colorimetric hematology

Three discrete measurement channels combine to provide an accurate Complete Blood Count with true 5-part differential. In only 60 seconds get results you can trust with laser flow cytometry, impedance counts and colorimetric detection technologies. This allows the Element HT5 to detect not only white blood cell volume, but cellular complexity and granularity as well. While accurate and fast, this analyzer remains very simple to use with a large color touch screen, intuitive navigation, simplified data entry and easy reagent management. Fast enough for the busiest clinics and cost effective for all.

Results in under 60 seconds

5 Part WBC Differential

Profitable - low cost per test

Intuitive Touchscreen Interface



# Combined Technologies

	Counting Channels	Technology	Parameters
1	Diff Channel	Flow Cytometry	LYM, MON, NEU, EOS
2	RBC/PLT Channel	Impedance	RBC/PLT
3	Baso/HGB Channel	Colorimetry	BAS, WBC, HGB



Features:

HT5

20 Test Parameters

**Consolidated Results and Reporting**  
Combine results using Heskaview Connect or transmit to your PMS. Rapidly retrieve patient workload with bi-directional communication.

**Easy Reagent Management**  
Refill reagents with ease using the barcode scanner and on-board menu functions. Internal reagent storage saves space and reduces clutter.

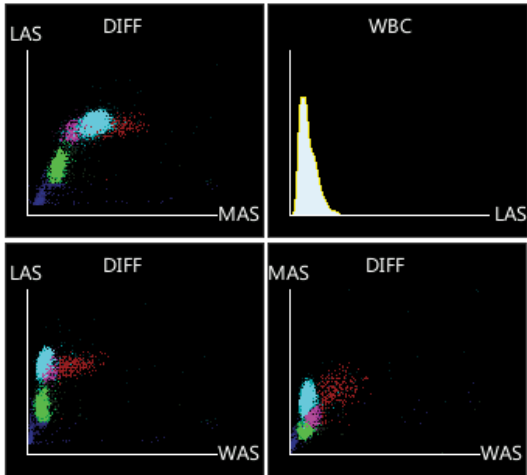
**Multiple Species Availability**  
Dog, cat, mouse, rat, rabbit, ferret, horse, cow, goat, sheep, llama, camel, pig, monkey, red panda and giant panda.

**Intuitive Navigation**  
Simplified data entry and patient test review with numeric results, histograms and scatter plots.

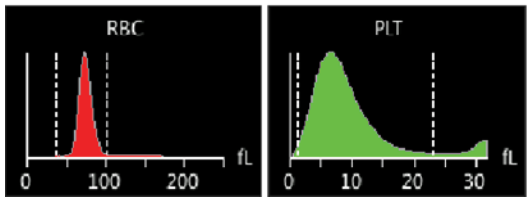


White Blood Cell	Red Blood Cell
Total White Blood Cell (WBC)	Total Red Blood Cell (RBC)
Neutrophil Number (NEU#)	Hemoglobin (HGB)
Lymphocyte Number (LYM#)	Hematocrit (HCT)
Monocyte Number (MON#)	Mean Cell Volume (MCV)
Eosinophil Number (EOS#)	Mean Cell Hemoglobin (MCH)
Basophil Number (BAS#)	Mean Cell Hemoglobin Conc. (MCHC)
Neutrophil Percent (NEU%)	Red Blood Cell Distribution (RDW-CV)
Lymphocyte Percent (LYM%)	
Monocyte Percent (MON%)	Platelet
Eosinophil Percent (EOS%)	Total Platelet (PLT)
Basophil Percent (BAS%)	Mean Platelet Volume (MPV)

## WBC Scatter Plots & Histograms



## RBC /PLT Histograms



## Results and Reporting

- Easy-to-Use:**
- Web-style links for simple navigation.
- Simple Data Management:**
- Rapidly retrieve trending data from patient record.
- Efficient:**
- Assign, unassign or delete multiple items at once.
  - Species-specific reference ranges and color-coded flags make it easy to quickly evaluate patient data.

