



# element HT5

Veterinary Hematology Analyzer

## True 5-part: laser + impedance + colorimetric hematology

Three discrete measurement channels combine to provide a true 5-part differential, with White Blood Cell, Red Blood Cell and Platelet parameter results from just a 15uL sample. In only 60 seconds get results you can trust, with laser flow cytometry, impedance counts and colorimetric detection technologies to detect not only white blood cell volume, but complexity and granularity obtained by a triple angle laser scatter. While accurate and fast, the Element HT5 remains very simple to use with a large color touch screen, intuitive navigation, simplified data entry and easy reagent management.

Results in under 60 seconds

Five-part Laser & Impedance

Profitable - low cost per test

Very Small 15uL Sample Size

Intuitive Touchscreen Interface



Counting Channels	Technology	Parameters
1 Diff Channel	Flow Cytometry	LYM, MON, NEU, EOS
2 RBC/PLT Channel	Impedance	RBC/PLT
3 Baso/HGB Channel	Colorimetry	BAS, WBC, HGB



## Features:

# HT5

## 20 Test Parameters

### Consolidated Results and Reporting

Combine results using the Heskaview Integrated Software program or transmit to your PMS. Rapidly retrieve patient worklist with bi-directional communication.

### Easy Reagent Management

Manage reagents via bar-code scanner and on-board menu functions. Internal reagent storage saves space and reduces clutter.

### Multi-Species Availability

Dog, Cat, Horse, Cow, Ferret, Goat, Llama, Monkey, Mouse, Giant Panda, Red Panda, Pig, Rabbit, Rat and Sheep.

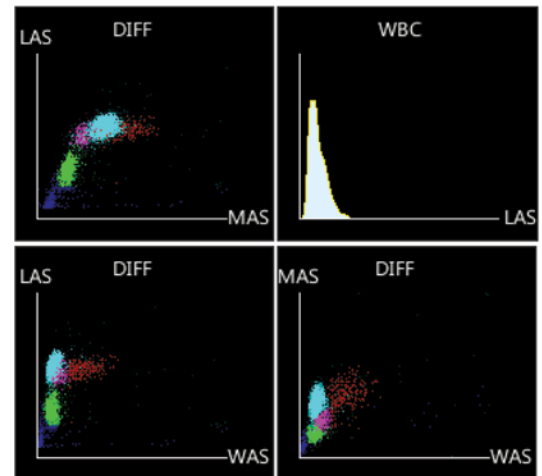
### Intuitive Navigation

Simplified data entry and patient test review with numeric results, histograms and scatter plots.

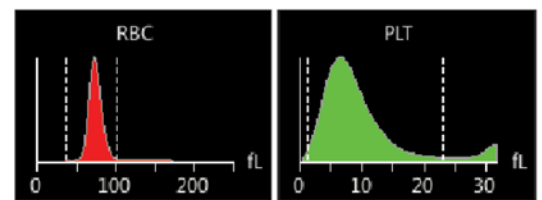


White Blood Cell	Red Blood Cell
Total White Blood Cell (WBC)	Total Red Blood Cell (RBC)
Neutrophil Number (NEU#)	Hemoglobin (HGB)
Neutrophil Percent (NEU%)	Hematocrit (HCT)
Lymphocyte Number (LYM#)	Mean Cell Volume (MCV)
Lymphocyte Percent (LYM%)	Mean Cell Hemoglobin (MCH)
Monocyte Number (MON#)	Mean Cell Hemoglobin Conc. (MCHC)
Monocyte Percent (MON%)	Red Blood Cell Distribution (RDW-CV)
Eosinophil Number (EOS#)	
Eosinophil Percent (EOS%)	<b>Platelet</b>
Basophil Number (BAS#)	Total Platelet (PLT)
Basophil Percent (BAS%)	Mean Platelet Volume (MPV)

## WBC Scatter Plots & Histograms



## RBC /PLT Histograms



## Results and Reporting

### Easy to Use:

- Web-style links for simple navigation.

### Simple Data Management:

- Rapidly retrieve trending data from patient record.

### Efficient:

- Assign, unassign or delete multiple items at once.
- Species-specific reference ranges and color-coded flags make it easy to quickly evaluate patient data.