

## HeskaView Telecytology Pro6 Slide Scanner

### Getting Started

1. Prep and stain slide(s). See HeskaView Telecytology Fluid Protocol flyer for specific information for your sample.
2. Ensure the HeskaView Pro6 Slide Scanner is turned on and the scanning software is open on desktop. Figure 1

### Loading Cassette Tray and Scanning

1. Place stained slides face up in the cassette tray. Figure 2
2. Ensure the three clips are engaged to hold each slide in place at the following locations:
  - Slide base
  - Slide side
  - Over the frosted edge
3. Open the door on the right side of the scanner.
4. Line up the white dot on the cassette tray with the GO arrow on the scanner.
5. Close door.
6. In the scanning software, uncheck any open boxes on the cassette tray graphic that do not contain a glass slide on the cassette tray.
7. Click **PREVIEW**.
8. Click on the preview image of the slide in the scanning software for each loaded slide.
9. If desired, adjust scan area on the preview image by double clicking and then dragging the red box to the area of interest, then click **OK**. Repeat for additional slides if needed. Figure 3
10. For best results, ensure the following on the scanning software: Figure 4
  - '40x' is selected and highlighted in orange.
  - Below the slide preview image, 'Standard' and '[Auto]' are selected in the first and second drop-down boxes respectively.
  - Rename each slide in the text box using the following format (with no spaces): patient\_site\_slide# (For example: jones\_poplitealLN\_1).
11. Click **SCAN**.

### After Scan is Complete

1. After scan is complete, click **UNLOAD TRAY**.
2. Open door on the left side of the scanner and remove cassette tray.
3. The scanner will return to the loading position.
4. View the slide by clicking on **MOTIC DSASSISTANT** software and select your slide.
5. Ensure the sample appears adequate and in focus.
6. Attach slides to case using the Telecytology portal, and submit.

### Troubleshooting

#### Long Estimated Scan Time

If an estimated scan time appears to be unusually long (*i.e.*, >40 minutes):

- Stop the scan, place slides in a different cassette tray, and rescan.

#### Focus Alert Error

The Focus Alert Error is designed to stop the submission of slides that have been scanned while turned upside down or severely tilted.

- Place the slides in a different cassette tray and rescan.
- Ensure slides are loaded in the correct position, and rescan.

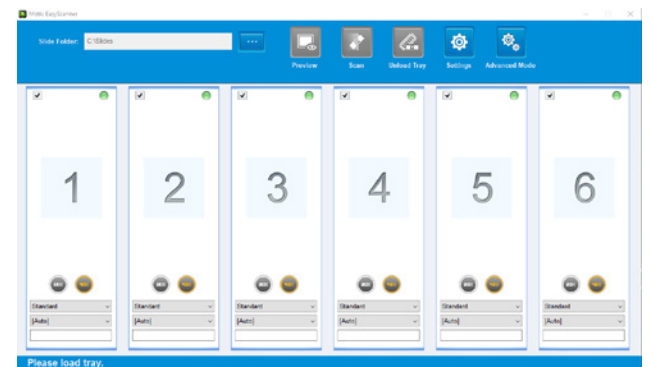


Figure 1



Figure 2

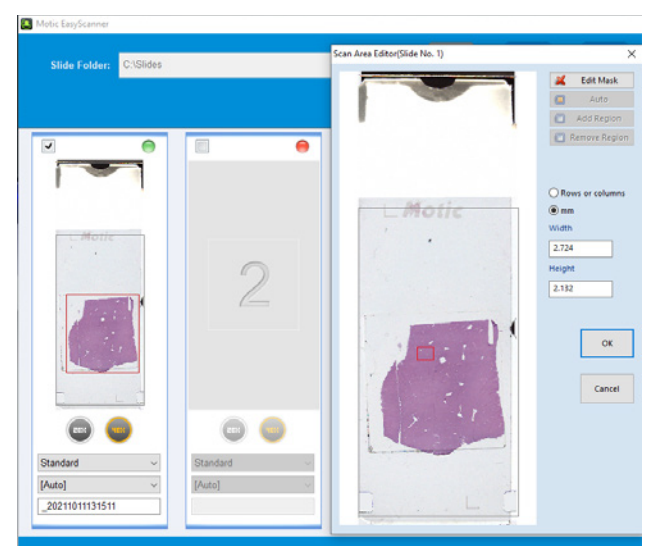


Figure 3



Figure 4