

NEW



 element **HT5+**  
Veterinary Hematology Analyzer

## True 5-Part WBC Differential PLUS Reticulocytes

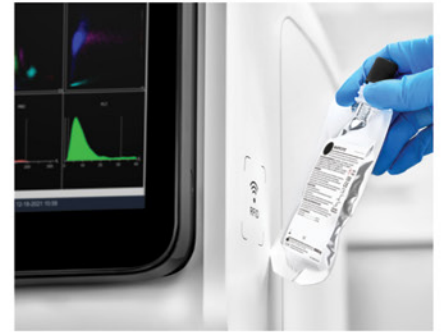
Advanced Heska Element HT5+™ technology provides an accurate and comprehensive CBC (Complete Blood Count) with a true 5-part differential, including reticulocyte parameters. Get results you can trust in 90 seconds, presented in a sleek designed intuitive color touchscreen interface. The Element HT5+ not only detects white blood cell volume, but cellular complexity and granularity as well. In addition to being accurate and fast, the Element HT5+ remains very simple to use with intuitive navigation, simplified data entry and easy reagent management. Complete CBC fast enough for the busiest clinics.

- 5-Part Differential + Reticulocytes
- Results in 90 seconds
- Industry-Leading Technology
- Intuitive Touchscreen Interface

# Combination Technology

Counting Channels	Technology	Parameters
1 Diff Channel	Laser Flow Cytometry	WBC Diff
2 RET Channel	SF Cube	RET
3 HGB Channel	Colorimetry	HGB
4 RBC/PLT Channel	Impedance	RBC, PLT

# RFID Management



## Features:

# HT5+

## + Test Parameters

### White Blood Cell

- Total White Blood Cell (WBC)
- Neutrophil Number (NEU #)
- Lymphocyte Number (LYM#)
- Monocyte Number (MON#)
- Eosinophil Number (EOS#)
- Basophil Number (BAS#)
- Neutrophil Percent (NEU%)
- Lymphocyte Percent (LYM%)
- Monocyte Percent (MON%)
- Eosinophil Percent (EOS%)
- Basophil Percent (BAS%)

### Platelet

- Total Platelet (PLT)
- Mean Platelet Volume (MPV)
- Platelet Dist. Width (PDW)
- Plateletcrit (PCT)

### Consolidated Results and Reporting

- Combine results using the Heskaview Connect™ program or transmit to your PIMS.
- Rapidly retrieve patient worklist with bi-directional communication.

### Easy Reagent Management

- Refill reagents with ease using RFID technology and on-board menu functions.

### Intuitive Navigation

- Simplified data entry and patient test review with numeric results, histograms and scatter plots.

### Advanced, 3rd generation dye technology

- More reliable reticulocyte detection

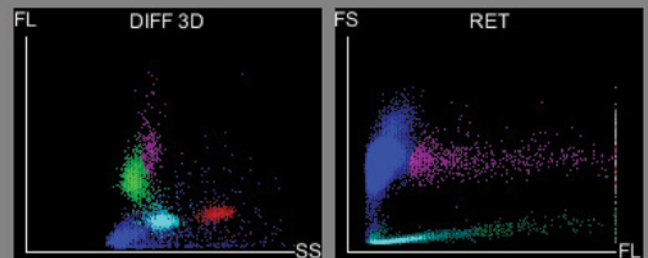
### Flags for abnormal cell morphology & populations

- Abnormal Cell Populations
- Immature Granulocytes
- Nucleated Red Blood Cells
- Platelet Clumps
- and more...

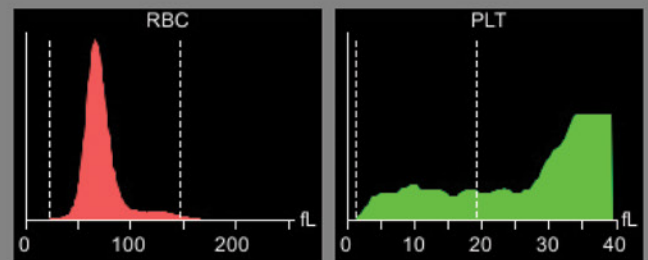
### Red Blood Cell

- Total Red Blood Cell (RBC)
- Hemoglobin (HGB)
- Hematocrit (HCT)
- Mean Cell Volume (MVC)
- Mean Corpuscular Hemoglobin (MCH)
- Mean Corpuscular Hemoglobin Concentration (MCHC)
- Red Blood Cell Distribution Width (RDW)
- Reticulocyte Count (RET#)
- Reticulocyte Percent (RET%)
- Reticulocyte Hemoglobin Expression (RHE)

## Graphical Interpretations



WBC DIFF & RET Scatterplots



RBC & PLT Histograms

## Results and Reporting

### Easy to Use:

- Web-style links for simple navigation.

### Simple Data Management:

- Rapidly retrieve trending data from patient record.

### Efficient:

- Assign, unassign or delete multiple items at once.
- Species-specific reference ranges and color-coded flags make it easy to quickly evaluate patient data.